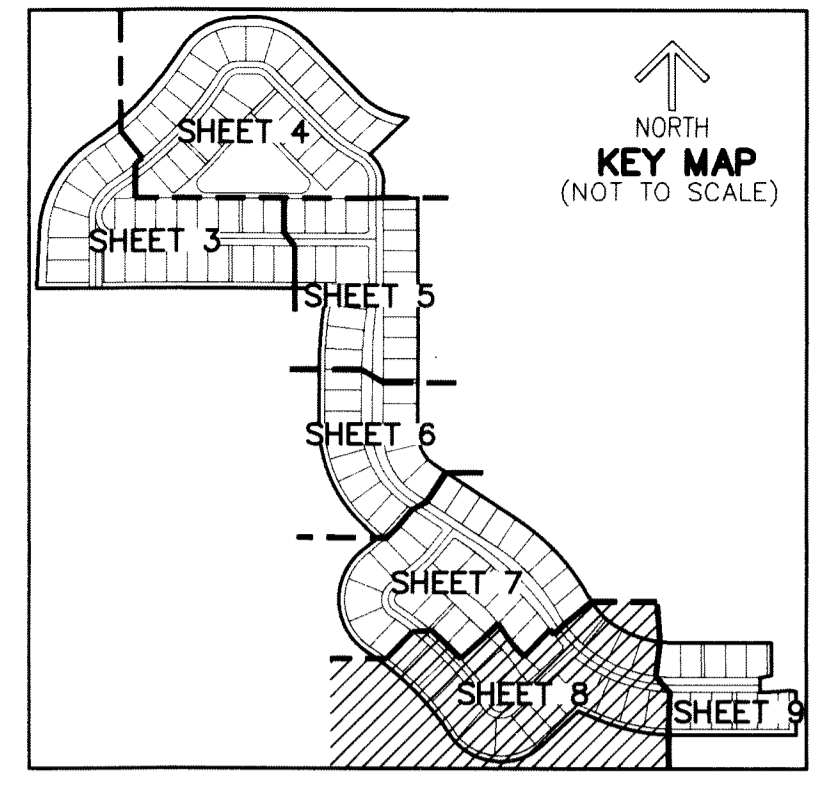


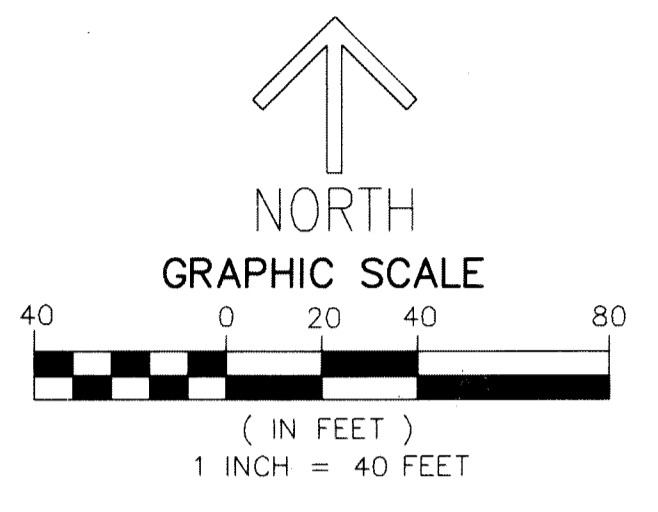
THIS INSTRUMENT PREPARED BY
 RONNIE L. FURNISS
 OF
CAULFIELD and WHEELER, INC.
 SURVEYORS — ENGINEERS — PLANNERS
 7900 GLADES ROAD, SUITE 100
 BOCA RATON, FLORIDA 33434 — (561)392-1991
 CERTIFICATE OF AUTHORIZATION NO. LB3591
 SEPTEMBER 2022

PANTHER NATIONAL AT AVENIR POD 12

A REPLAT OF A PORTION OF TRACT 1, PANTHER NATIONAL AT AVENIR, AS RECORDED IN
 PLAT BOOK 134, PAGE 18 OF THE PUBLIC RECORDS OF PALM BEACH COUNTY, FLORIDA,
 LYING IN SECTIONS 8 AND 9, TOWNSHIP 42 SOUTH, RANGE 41 EAST,
 CITY OF PALM BEACH GARDENS, PALM BEACH COUNTY, FLORIDA.

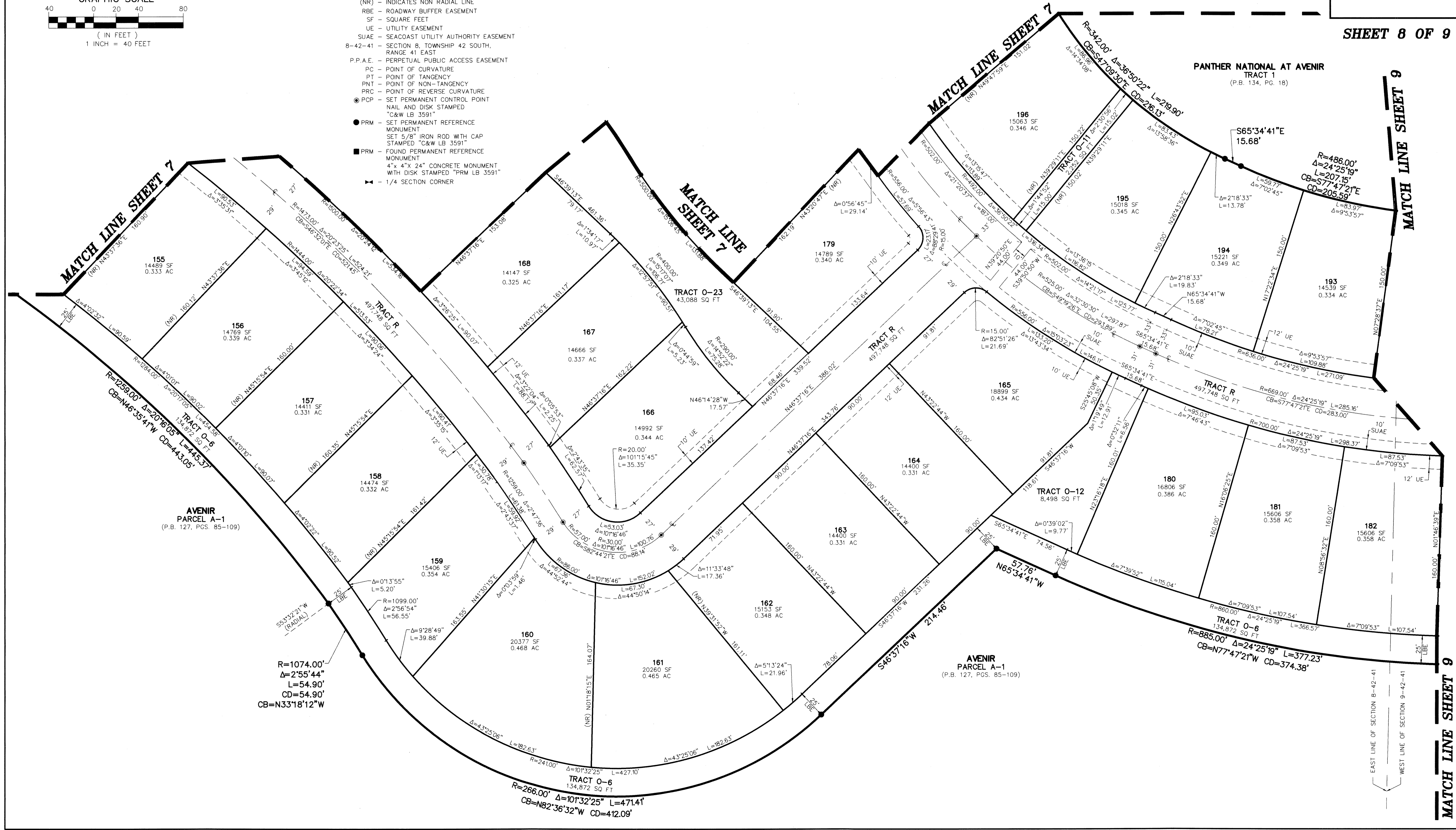


127



- LEGEND/ABBREVIATIONS**
- C — CENTERLINE
 - Δ — DELTA (CENTRAL ANGLE)
 - AC — ACRES
 - CB — CHORD BEARING
 - CD — CHORD DISTANCE
 - DE — DRAINAGE EASEMENT
 - FSE — FIRE SAFETY ACCESS EASEMENT
 - L — ARC LENGTH
 - LM — LAKE MAINTENANCE ACCESS EASEMENT
 - LAE — LIMITED ACCESS EASEMENT
 - LB — LICENSED BUSINESS
 - LBE — LANDSCAPE BUFFER EASEMENT
 - LSE — LIFT STATION EASEMENT
 - O.R.B. — OFFICIAL RECORD BOOK
 - P.B. — PLAT BOOK
 - R — RADIUS
 - PG./PGS. — PAGE/PAGES
 - O-1 — OPEN SPACE TRACT 1
 - (NR) — INDICATES NON-RADIAL LINE
 - RBE — ROADWAY BUFFER EASEMENT
 - SF — SQUARE FEET
 - UE — UTILITY EASEMENT
 - SUAE — SEACOAST UTILITY AUTHORITY EASEMENT ACCESS EASEMENT
 - 8-42-41 — SECTION 8, TOWNSHIP 42 SOUTH, RANGE 41 EAST
 - P.P.A.E. — PERPETUAL PUBLIC ACCESS EASEMENT
 - PC — POINT OF CURVATURE
 - PT — POINT OF TANGENCY
 - PNT — POINT OF NON-TANGENCY
 - PRC — POINT OF REVERSE CURVATURE
 - PCP — SET PERMANENT CONTROL POINT NAIL AND DISK STAMPED "C&W LB 3591"
 - PRM — SET PERMANENT REFERENCE MONUMENT SET 5/8" IRON ROD WITH CAP STAMPED "C&W LB 3591"
 - PRM — FOUND PERMANENT REFERENCE MONUMENT 4" x 4" x 24" CONCRETE MONUMENT WITH DISK STAMPED "PRM LB 3591"
 - 1/4 — 1/4 SECTION CORNER

SHEET 8 OF 9



MATCH LINE SHEET 9

EAST LINE OF SECTION 8-42-41
 WEST LINE OF SECTION 9-42-41